



CERTIFICATE OF ANALYSIS WITH PRODUCT SPECIFICATIONS

PRODUCT: CBD Distillate
PRODUCT CODE: 685155
PRODUCT DESCRIPTION: Nutritional Supplement
LOT NUMBER: 080121
MFG DATE: August 01, 2019

MICRO ANALYSIS

PARAMETER	UNIT OF MEASURE	STANDARD	MEAN RESULT
Aerobic Plate Count	cfu/g	< 10,000	Conforms
Coliforms	cfu/g	0	Not Detected
E. Coli Count Plate	cfu/g	0	Not Detected
Yeast & Mold	cfu/g	< 1	Not Detected
Salmonella	BAM /25g	Negative	Negative
Coag Positive Staph Aure	cfu/g	0	Not Detected
Heavy Metal	ICP-MS		Conforms
Arsenic	ppm	Report Only	Not Detected
Cadmium	ppm	Report Only	Not Detected
Lead	ppm	Report Only	Not Detected
Mercury	ppm	Report Only	Not Detected

Cannabinoid Profile / % by volume

Component	%
CBD	85.32
CBDA	N/D
CBG	0.06
CBN	1.85
CBC	0.07
D8THC	N/T
D9THC	<LOQ
Total Cannabinoids	87.3

USES: Nutritional Supplement.
DOSAGE: 1 to 2 drops daily.
STORAGE: Cool and dry, below 30c.
SHELF LIFE: 24 months unopened – 12 months after opening in sealed container.
INGREDIENTS LIST: Pyto Rich Hemp Extract.
PACKAGING: Bulk.

CERTIFICATION: This product is in compliance with U.S. federal regulations.

ARSNLabs
3043 Alhambra Drive
Cameron Park, CA 95682

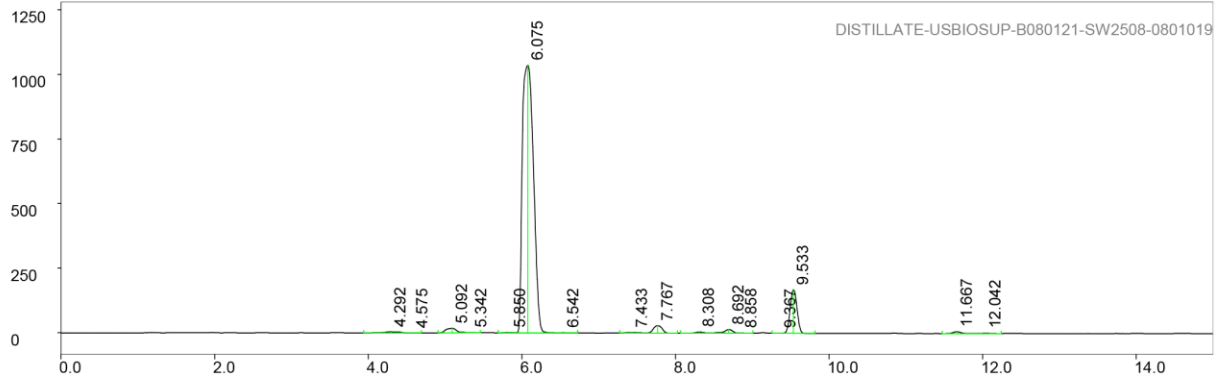
877-863-7700
www.arsnlabs.com
testing@arsnlabs.com



CERTIFICATE OF ANALYSIS WITH PRODUCT SPECIFICATIONS

Chromatograph

PAGE 1 LP-chrom 2.10 2018-Dec-16 12:28:08



Program: LP-chrom 2.10 2018-Dec-16 12:28:08
 Running under: Windows NT 6.2 (build 9200)
 Plot: C:\Users\Lab\Desktop\data\DISTILLATE-USBIOSUP-B080121-SW2508-0801019
 Exported: 08/01/19 14:42:59.789
 Program: LP-chrom 2.10 2018-Dec-16 12:28:08
 System: Windows NT 6.2 (build 9200)
 Chromatograph using method:

from file: cannabinoids
 Analytical pump method (max flow = 10 [ml/min])
 TIME FLOW %A %B
 0.0 0.700 30 70
 0.5 0.700 30 70
 6.0 0.700 5 95
 12.0 0.700 5 95
 12.1 0.700 30 70
 15.0 0.700 30 70

Autozero before rec
 Detector Beckman 166 DET/3 on serial port:COM4
 Det:A, wavelen 280 nm

peak num	retention time [min]	area [mVolt*min]	area percent [%]	height [mVolt]	begin [min]	end [min]	max Y [mVolt]	type (S)ingle (R)+(L)
1	4.29167	0.97279	0.47503	4.24310	3.94167	4.49167	4.23799	R+
2	4.57500	0.03544	0.01731	0.28866	4.49167	4.69167	0.27940	+L
3	5.09167	2.85928	1.39625	17.54248	4.90833	5.30000	17.94148	R+
4	5.34167	0.13565	0.06624	1.24097	5.30000	5.45833	1.95319	+L
5	5.85000	0.29042	0.14182	1.93232	5.69167	5.92500	1.59528	R+
6	6.07500	174.72516	85.32204	1036.79571	5.92500	6.46667	1036.41541	R+L
7	6.54167	0.14451	0.07057	0.83498	6.46667	6.72500	0.36494	+L
8	7.43333	0.50074	0.24452	2.49754	7.27500	7.62500	1.82204	R+
9	7.76667	3.79477	1.85307	28.83530	7.62500	8.02500	27.86798	+L
10	8.30833	0.58227	0.28433	4.39626	8.06667	8.42500	3.15239	R+
11	8.69167	1.96599	0.96003	14.16539	8.42500	8.81667	12.87537	R+L
12	8.85833	0.09335	0.04559	0.87717	8.81667	9.00833	-0.43292	+L
13	9.36667	0.07176	0.03504	0.97019	9.25833	9.39167	-0.63776	R+
14	9.53333	17.58569	8.58747	168.95803	9.39167	9.81667	167.15041	+L
15	11.66667	0.85422	0.41714	6.98893	11.47500	11.90833	4.44896	R+
16	12.04167	0.17111	0.08356	1.24960	11.90833	12.24167	-1.29701	+L

Sum area: 204.78316
 Peaks accepted: 16 (excluded: 59 total: 75)

ARSNLabs
 3043 Alhambra Drive
 Cameron Park, CA 95682

877-863-7700
 www.arsnlabs.com
 testing@arsnlabs.com