



## CERTIFICATE OF ANALYSIS WITH PRODUCT SPECIFICATIONS

**PRODUCT:** CBD Distillate  
**PRODUCT CODE:** 685155  
**PRODUCT DESCRIPTION:** Nutritional Supplement  
**LOT NUMBER:** 070921  
**MFG DATE:** July 09, 2019

### MICRO ANALYSIS

PARAMETER	UNIT OF MEASURE	STANDARD	MEAN RESULT
Aerobic Plate Count	cfu/g	< 10,000	Conforms
Coliforms	cfu/g	0	Not Detected
E. Coli Count Plate	cfu/g	0	Not Detected
Yeast & Mold	cfu/g	< 1	Not Detected
Salmonella	BAM /25g	Negative	Negative
Coag Positive Staph Aure	cfu/g	0	Not Detected
Heavy Metal	ICP-MS		Conforms
Arsenic	ppm	Report Only	Not Detected
Cadmium	ppm	Report Only	Not Detected
Lead	ppm	Report Only	Not Detected
Mercury	ppm	Report Only	Not Detected

### Cannabinoid Profile / % by volume

Component	%
CBD	90.42
CBDA	N/D
CBG	N/T
CBN	0.02
CBC	N/T
D8THC	N/T
D9THC	N/D
<b>Total Cannabinoids</b>	<b>90.44</b>

**USES:** Nutritional Supplement.  
**DOSAGE:** 1 to 2 drops daily.  
**STORAGE:** Cool and dry, below 30c.  
**SHELF LIFE:** 24 months unopened – 12 months after opening in sealed container.  
**INGREDIENTS LIST:** Pyto Rich Hemp Extract.  
**PACKAGING:** Bulk.

**CERTIFICATION:** This product is in compliance with U.S. federal regulations.

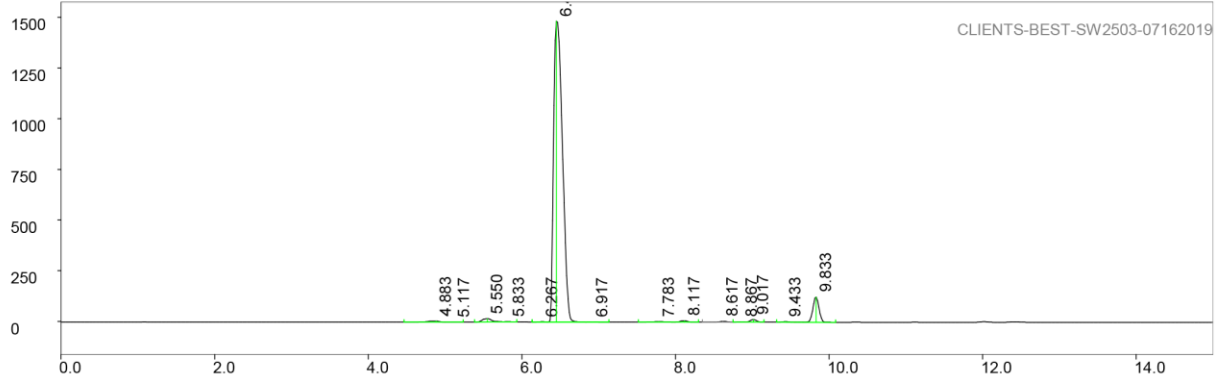
ARSNLabs  
3043 Alhambra Drive  
Cameron Park, CA 95682

877-863-7700  
www.arsnlabs.com  
testing@arsnlabs.com



# CERTIFICATE OF ANALYSIS WITH PRODUCT SPECIFICATIONS

PAGE 1 LP-chrom 2.10 2018-Dec-16 12:28:08



Program: LP-chrom 2.10 2018-Dec-16 12:28:08  
 Running under: Windows NT 6.2 (build 9200)  
 Plot: C:\Users\Lab\Desktop\data\CLIENTS-BEST-SW2503-07162019  
 Exported: 07/16/19 08:51:47.867  
 Program: LP-chrom 2.10 2018-Dec-16 12:28:08  
 System: Windows NT 6.2 (build 9200)  
 Chromatograph using method:

from file: cannabinoids  
 Analytical pump method (max flow = 10 [ml/min])  

TIME	FLOW	%A	%B
0.0	0.700	30	70
0.5	0.700	30	70
6.0	0.700	5	95
12.0	0.700	5	95
12.1	0.700	30	70
15.0	0.700	30	70

Autozero before rec  
 Detector Beckman 166 DET/3 on serial port:COM4  
 Det:A, wavelen 280 nm

peak num	retention time [min]	area [mVolt*min]	area percent [%]	height [mVolt]	begin [min]	end [min]	max Y [mVolt]	type (S)ingle (R)+(L)
1	4.88333	0.98875	0.45553	4.98150	4.46667	5.00000	2.34838	R+
2	5.11667	0.05112	0.02355	0.31846	5.00000	5.23333	-2.19476	+L
3	5.55000	2.52197	1.16189	16.82041	5.38333	5.75000	14.66452	R+
4	5.83333	0.16361	0.07538	1.31487	5.75000	5.93333	-0.38175	+L
5	6.26667	0.21629	0.09965	1.92425	6.13333	6.33333	-0.53230	R+
6	6.45000	198.22087	91.32221	1484.39804	6.33333	6.83333	1481.95996	R+L
7	6.91667	0.14016	0.06457	0.88988	6.83333	7.13333	-1.50120	+L
8	7.78333	0.51662	0.23801	2.76247	7.51667	7.98333	0.31062	R+
9	8.11667	0.77067	0.35506	6.62640	7.98333	8.30000	4.06678	+L
10	8.61667	0.37157	0.17119	3.68856	8.35000	8.75000	1.48186	S
11	8.86667	0.12813	0.05903	1.47212	8.75000	8.91667	-0.69444	R+
12	9.01667	1.18009	0.54368	12.78405	8.91667	9.15000	10.40960	+L
13	9.43333	0.27159	0.12512	2.76835	9.31667	9.55000	0.02360	R+
14	9.83333	11.51513	5.30513	124.09085	9.55000	10.08333	121.09140	+L

Sum area: 217.05658  
 Peaks accepted: 14 (excluded: 28 total: 42)

ARSNLabs  
 3043 Alhambra Drive  
 Cameron Park, CA 95682

877-863-7700  
 www.arsnlabs.com  
 testing@arsnlabs.com